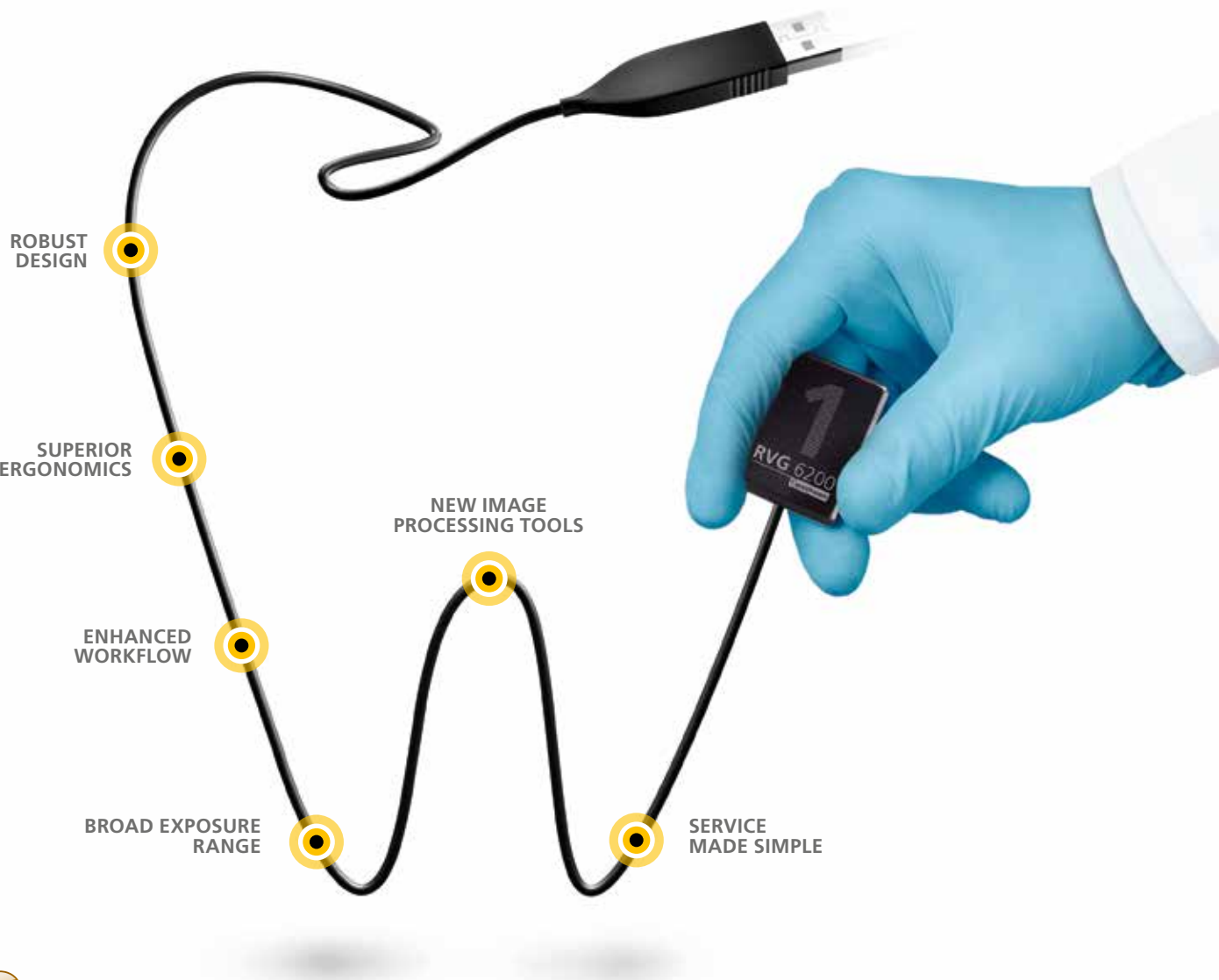


RVG 6200



Full range imaging for diagnostic confidence



WITH TECHNOLOGY THAT **WORKS THE WAY YOU DO**

OPTIMAL WORKFLOW TO FIT YOUR PRACTICE

The new RVG 6200 is technology that redefines intraoral imaging. Our latest innovations in intraoral imaging sim-

plify your workflow and can be customized according to your preferences.



With intuitive installation and broad software compatibility, Carestream Dental once again delivers on our promise to create humanized technology and market-leading workflow integration. With user-driven functionality,

the RVG 6200 immediately integrates into your practice. Meaning your diagnostic efficiency is increased through cutting-edge intraoral imaging, tailored to the way you work.

RVG IMAGING SOFTWARE REDEFINED WITH YOU IN MIND

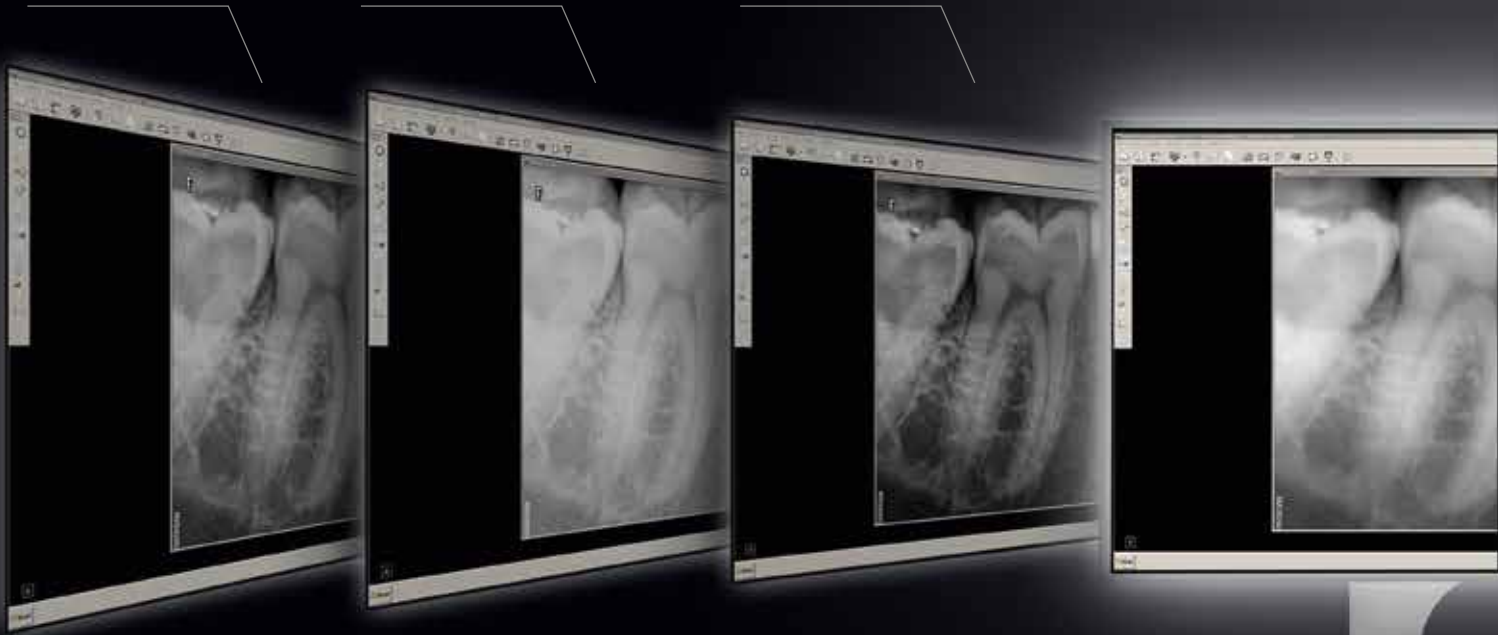
ANATOMICAL FILTERS

ENDODONTIC

PERIODONTIC

DENTIN-ENAMEL

UNFILTERED IMAGE



High Image
Quality



User-Defined
Image Processing Tools

FULL RANGE IMAGING FOR DIAGNOSTIC CONFIDENCE

The latest RVG 6200 image processing software is all about improving your diagnostic confidence. It redefines intraoral imaging to work the way you do. Excellent True Image Resolution ensures a solid foundation on which to base your diagnosis. Combining images that offer 24 lp/mm true resolution with a user-friendly software interface, the RVG 6200 makes sophisticated imagery simple.

New user-defined image processing tools allow you to customize images to suit your own practice. Prepro-

grammed settings including endodontic, periodontic, and dentin-enamel junction filters, optimize image contrast for efficient and accurate diagnoses. The sharpness filter then makes it simple to see contrast changes in real time. With 6 sharpness options, you can further customize images and define your own preferred look and feel.

For your convenience, you can also select an anatomical mode and sharpness level and save it as a custom default setting.

SHARPNESS FILTERS

FILTERED IMAGE

LEVEL 1

LEVEL 3

LEVEL 6



The sensor offers excellent flexibility for image capture over a wide range of exposure. Both accommodating and versatile, the RVG 6200 sensor does not require time-consuming fine tuning of exposure to produce a clinically useful image. The convenient dose indicator also helps identify over or under-exposures, so the operator can quickly and easily find the perfect setting.

The uniquely designed FMS interface delivers efficient and easy FMS examinations with simplified image acquisition

and personalized workflow. Step-by-step assistance guides the user at each stage of the FMS process, indicating which teeth need to be radiographed, reducing the risk of retakes.

With the latest user-oriented features of our most sophisticated imaging software, diagnosis has been redefined both for the benefit of your workflow and the comfort of your patients.

HARDWARE FOR HARD-KNOCKS



OUR LATEST INTRAORAL IMAGING HARDWARE UNDERGOES EXTREME TESTING FOR NEW LEVELS OF PROVEN DURABILITY



24 hour immersion

Pulls, bites and drops – our testing process simulates the tough working conditions of a busy dental practice. The new sensor design of the RVG 6200 steps up to these challenges with connection points along the cable reduced by 50% and injection molded for reinforced durability. Stronger and more flexible than ever before, the cable is created with protective alloy mesh for supreme flexibility and Teflon lining to reduce friction during bending. With the RVG 6200, you're more

than prepared for any situation that tests hardware durability to the limit.

A shock resistant and waterproof casing securely protects the sensor, which is immersed in water for 24 hours to guarantee the hermetic seal. Ensuring it is both airtight and watertight eliminates any risk of damage to the CMOS sensor component during oral use or the disinfection process.



Maximum Durability

The RVG 6200 is also tested for 10 years of intensive use. The cable and sturdy back-connection point is exposed to over 100,000 severe flexes and is also designed to withstand forces of up to 15 lb/7kg – our best ever RVG sensor cable strength that eliminates any need for detachable cables.

And for revolutionary technology with long-term peace of mind, we have included a standard Care Protect five-year replacement warranty with each RVG 6200 sensor. For unprecedented durability and technology that is safe, hygienic and built to last, the RVG 6200 redefines intraoral imaging.

YOUR WORKFLOW OPTIMIZED AND INTEGRATED



1.
Position – positioners enable correct sensor placement for accuracy and comfort



2.
Expose – the sensor is always armed and ready to acquire images



3.
View – images are acquired easier and quicker than ever before



High image Quality

WITH JUST THREE EASY STEPS THE RVG 6200 INTEGRATES SEAMLESSLY INTO YOUR WORKFLOW

With the RVG 6200, image acquisition is easier and quicker than ever before. Images appear on your screen within seconds, creating the fastest image capture on the market. The intuitive sensor is always armed and ready to acquire images and no longer features a control box. This streamlines usability and reduces workflow by two steps compared to previous models of RVG. Simply position, expose and view.

The RVG 6200 also optimizes workflow by eliminating the need for opening the image acquisition interface when preparing for a single image. Furthermore, if you encounter any problems during positioning, there is no need to rearm the sensor for acquisition. TWAIN compatibility means the sensor can be integrated with almost any imaging and dental practice management software, including Carestream Dental practice management software.

COMFORTABLE WORKFLOW MEANS PATIENT COMFORT



User-Defined Image
Processing Tools

REDEFINING WORKFLOW ACCORDING TO YOUR NEEDS, CREATES BEST EVER PATIENT COMMUNICATION

Redefining intraoral imaging with the RVG 6200 means reducing workflow through optimized and personalized image capture and processing. Advances in the software and hardware have set the premise for a more confident diagnosis, enhancing communication between you and your patients. Furthermore, if a second opinion is required, the imaging software has a functionality that makes sharing, importing and exporting images quick and simple.

Reduced workflow results in a quicker diagnosis and that means less time in the chair for your patient. With state-of-the-art technology creating a customized comfort zone for every appointment – explaining your diagnosis to your patient has never been easier.

REDEFINED ERGONOMICS



RETHINKING ERGONOMICS FOR BETTER IMAGING AND IMPROVED PATIENT COMFORT

The sleek design of the new sensor head with rounded corners creates a win-win situation for both you and your patient. The cable housing has been streamlined to create a more comfortable patient experience, simplifying placement and positioning of the sensor for improved image acquisition. A 20% thinner and more flexible cable prioritizes patient comfort during

placement in the mouth, while enabling improved bitewing acquisition.

The RVG 6200 also includes a complete set of positioning devices to achieve a greater degree of accuracy, with more consistent images and faster image acquisition. Redefining ergonomics redefines your practice.

TECHNOLOGY YOU CAN RELY ON – WITH INTUITIVE INSTALLATION



Convenient Quickstart

INTUITIVE INSTALLATION FOR A SIMPLE TRANSITION TO DIGITAL DENTISTRY

With the RVG 6200, we have created a supremely easy installation and maintenance process, making it the ideal choice for those transitioning to digital imaging for the first time, converting from another digital system, or upgrading from a previous generation RVG sensor.

Once up and running, the post-installation tool verifies that the sensor is correctly installed and checks communication with the software. Service tools are provided for trouble-shooting issues and provide feedback that helps you become more familiar with the technology.

Technical specifications

	Size 1	Size 2
Technology	CMOS Scintillator Optical Fiber	CMOS Scintillator Optical Fiber
Pixel dimension	19 microns	19 microns
True (measured) resolution	24 lp/mm	24 lp/mm
Active area	22,2 x 29,6 mm	26,6 x 35,5 mm
Overall dimensions	27,6 x 37,7 mm	32,2 x 44,2 mm
Sensor plate thickness	7,3 mm	7,3 mm
Gray scale	4096 grey levels (12 bits)	4096 grey levels (12 bits)
Input voltage (from USB interface)	5V	5V



Smart RVG 6200 accessories

The RVG 6200 system comes with all the accessories you need to optimize your image processing, including a sample pack of disposable hygienic sheaths, positioners, and mounting holders.



Toothbrush-type holders



Hygienic sheaths

LET'S REDEFINE EXPERTISE

The RVG 6200 is just one way we redefine imaging.

Discover more at carestreamdental.com or contact your local authorized dealer.